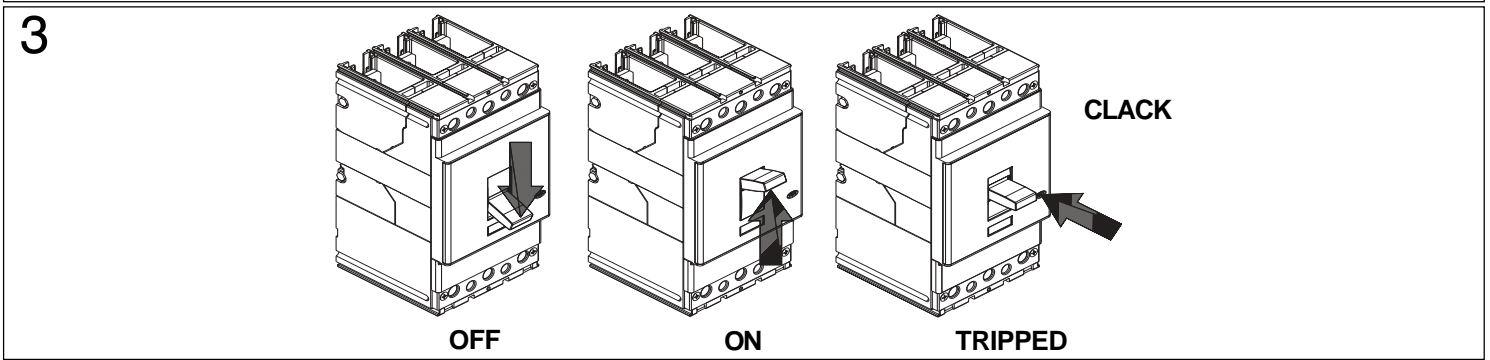
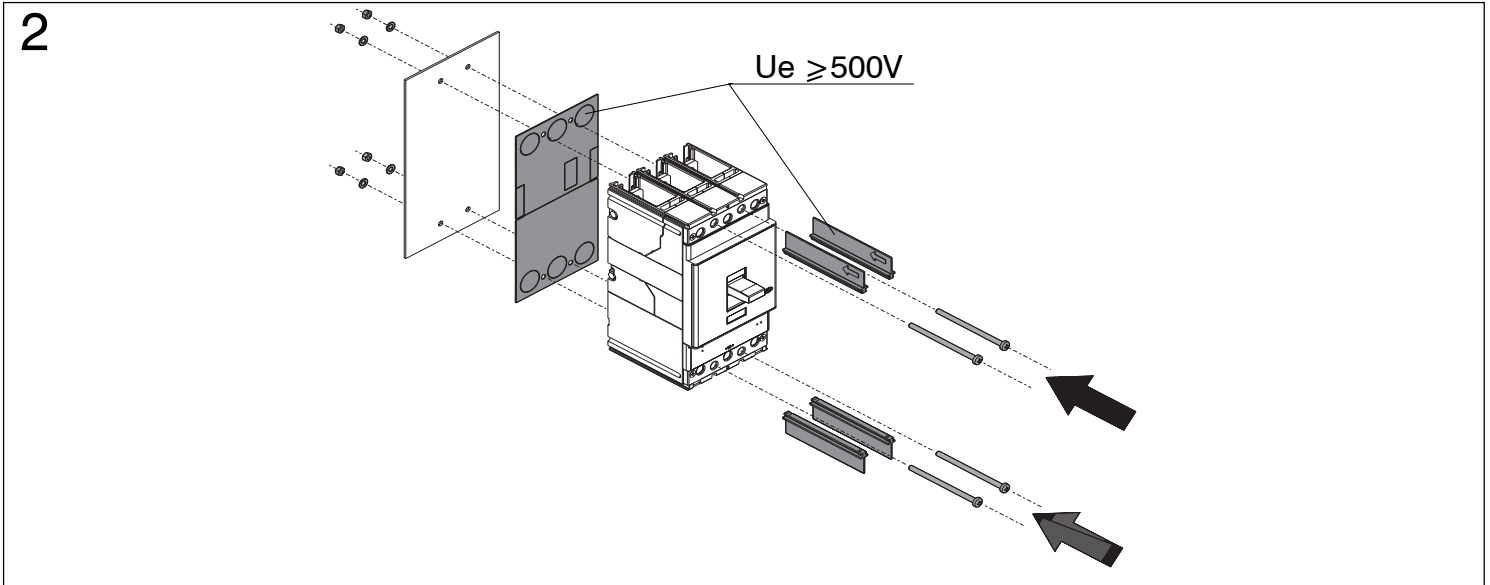
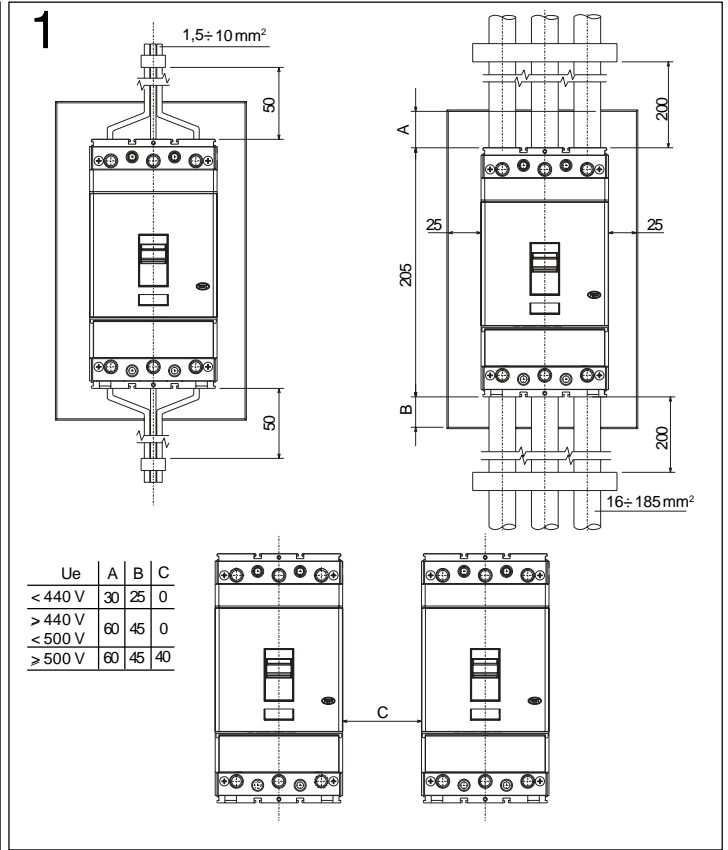
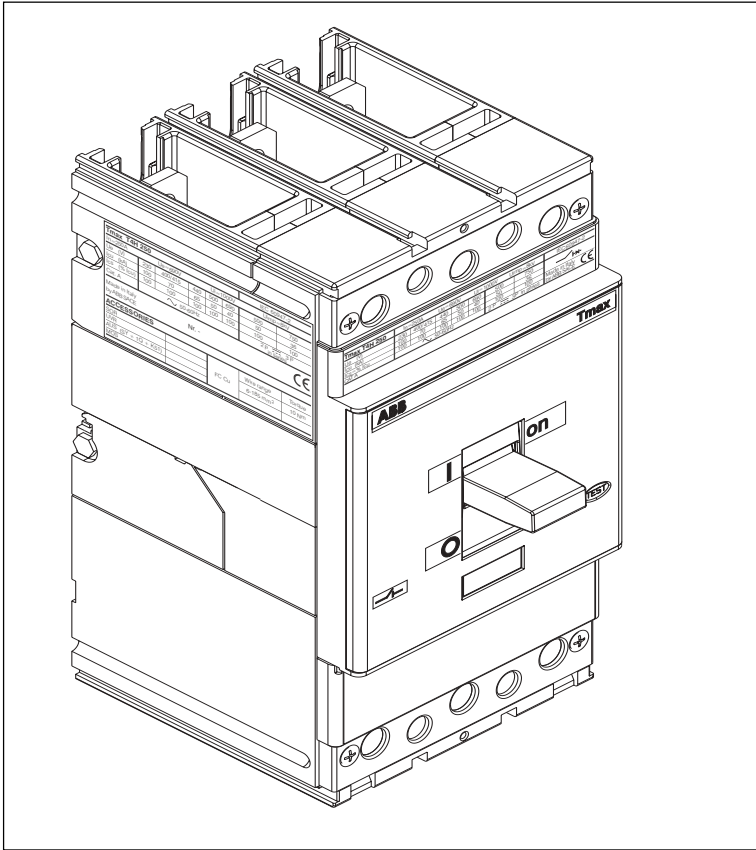


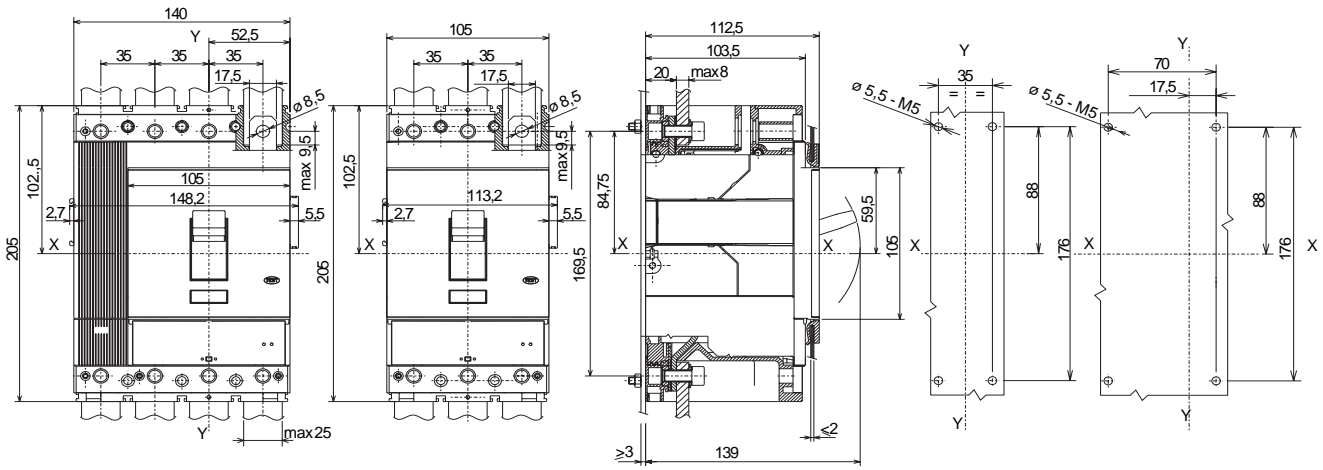
Tmax T4

DOC. N.º 1SDH000436R0.001- L0501



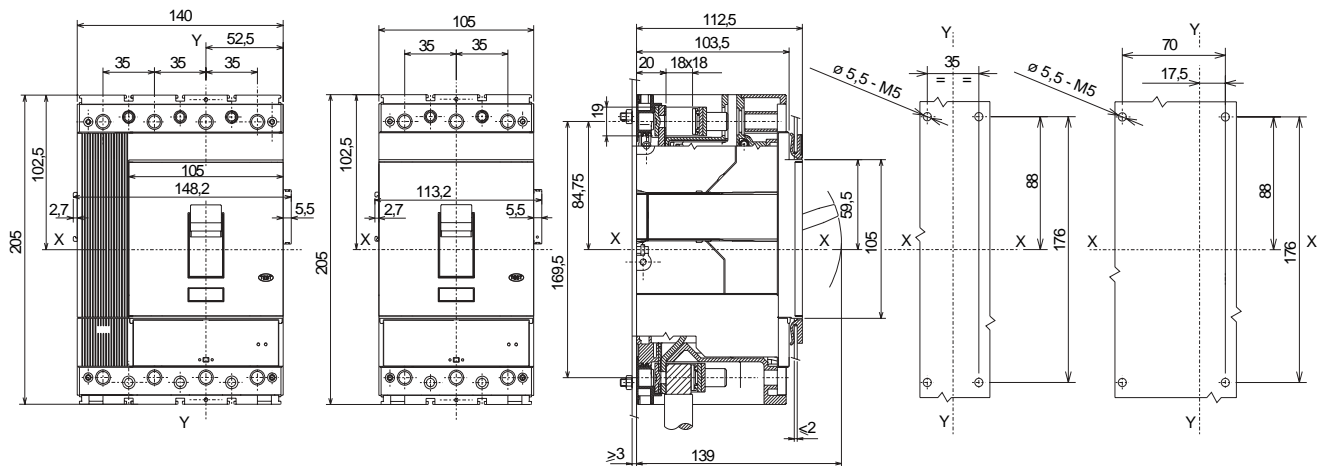
4

F - F



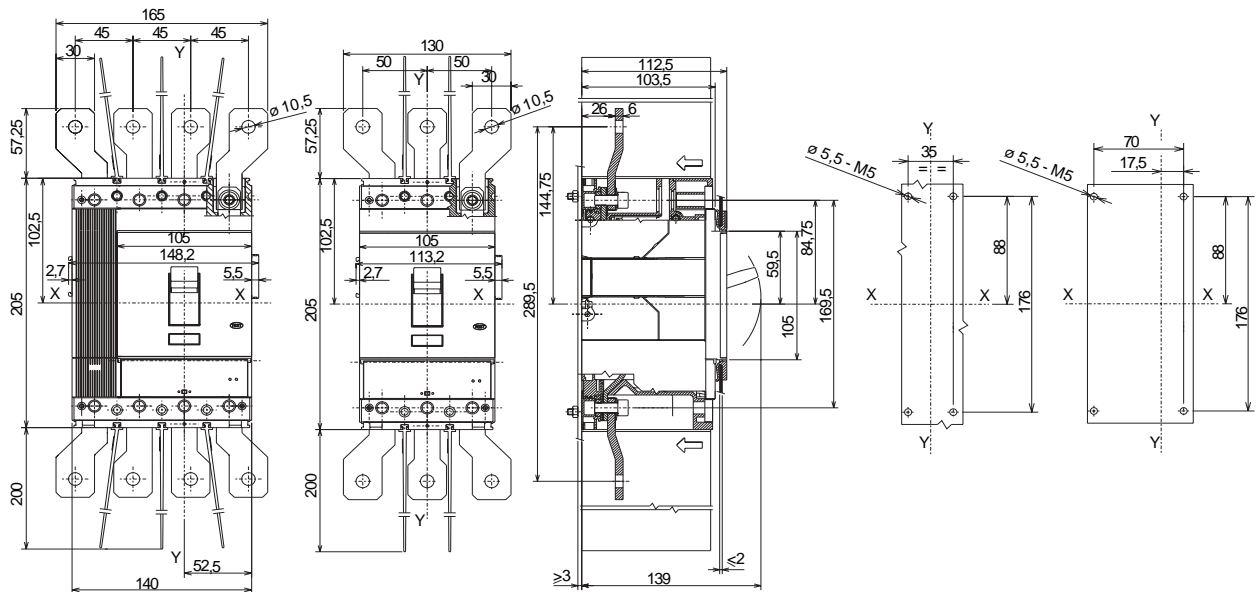
5

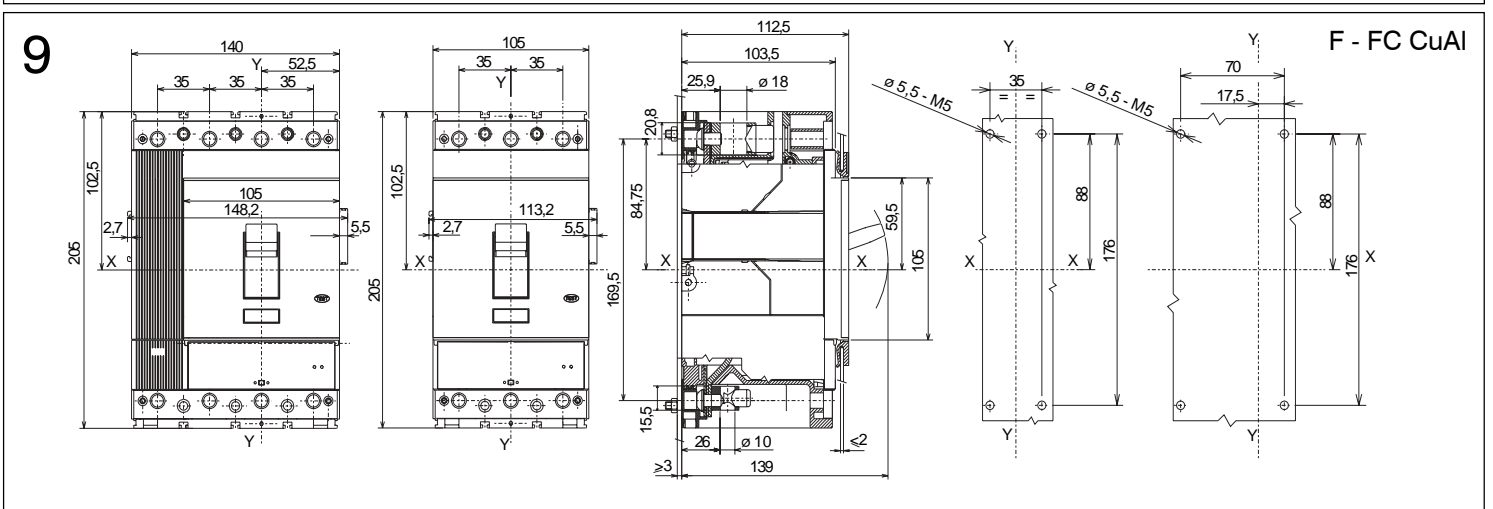
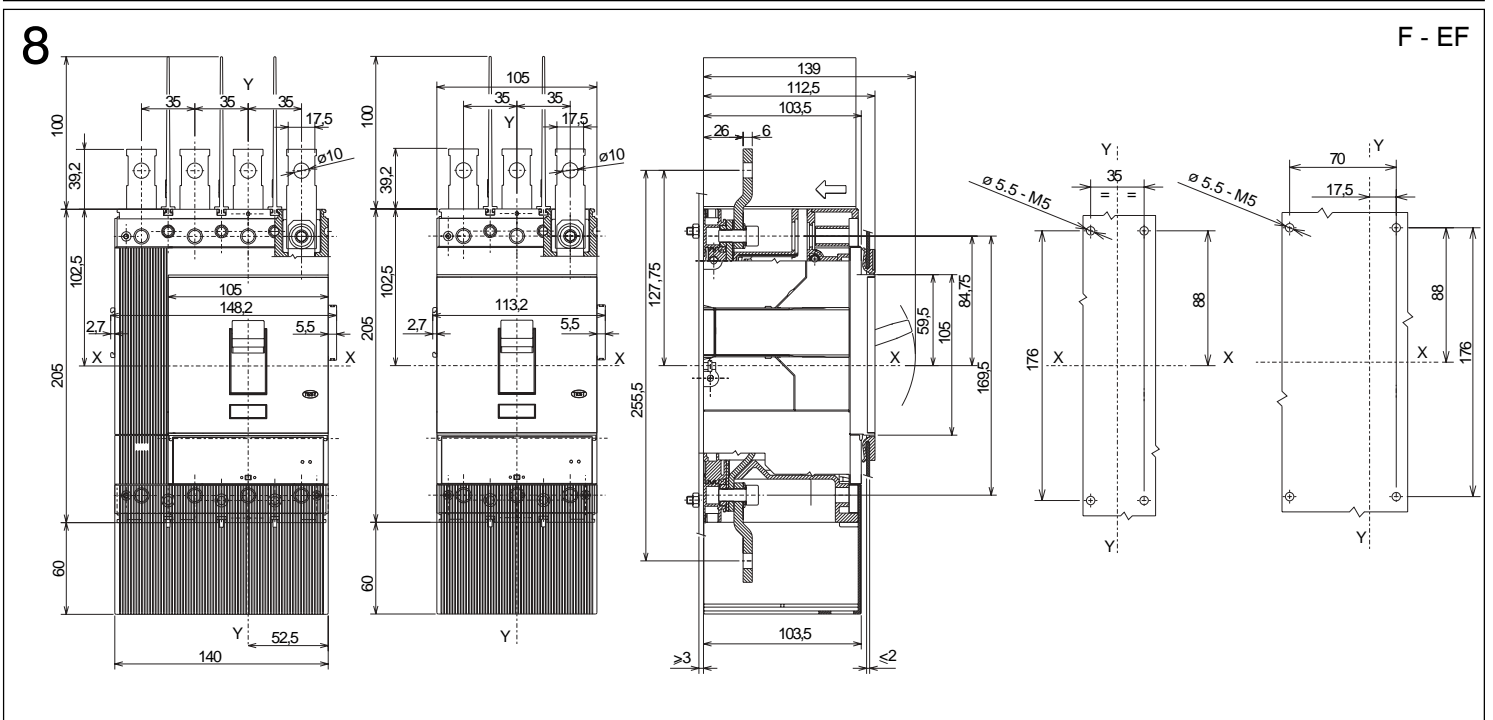
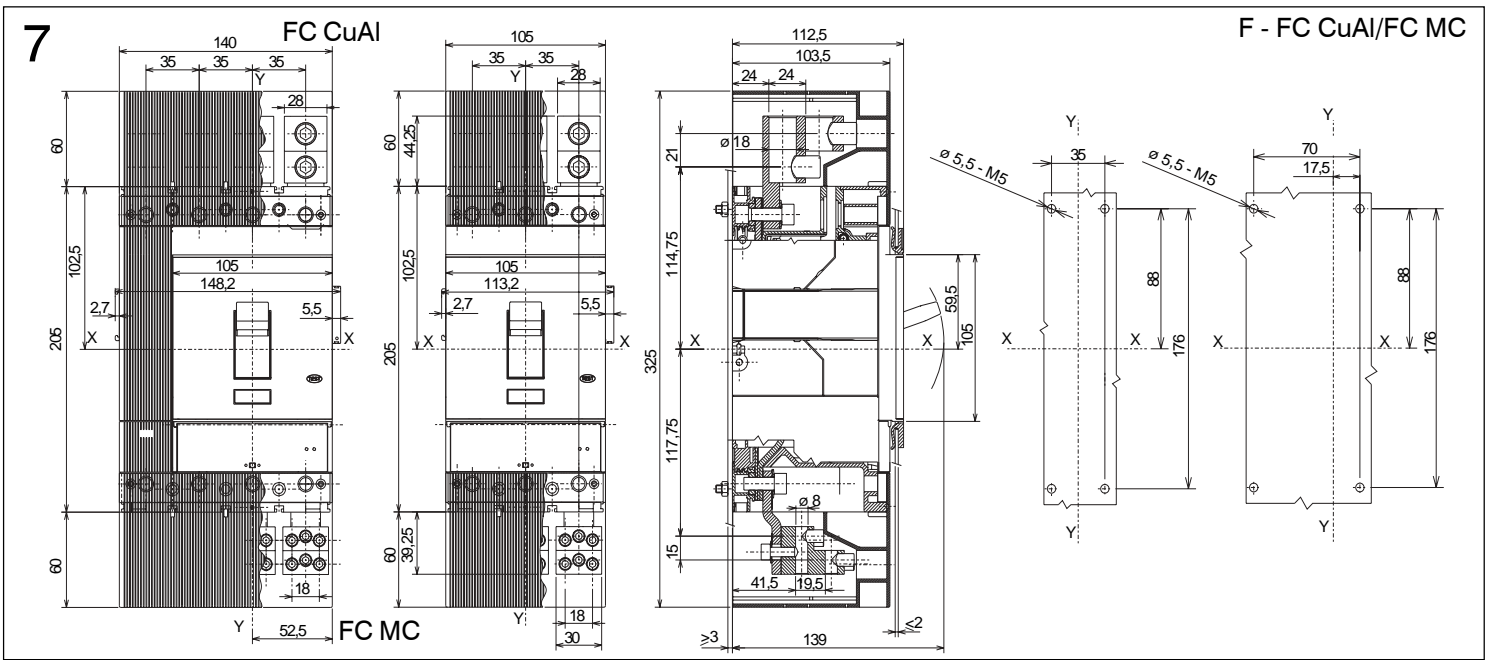
F - FCu



6

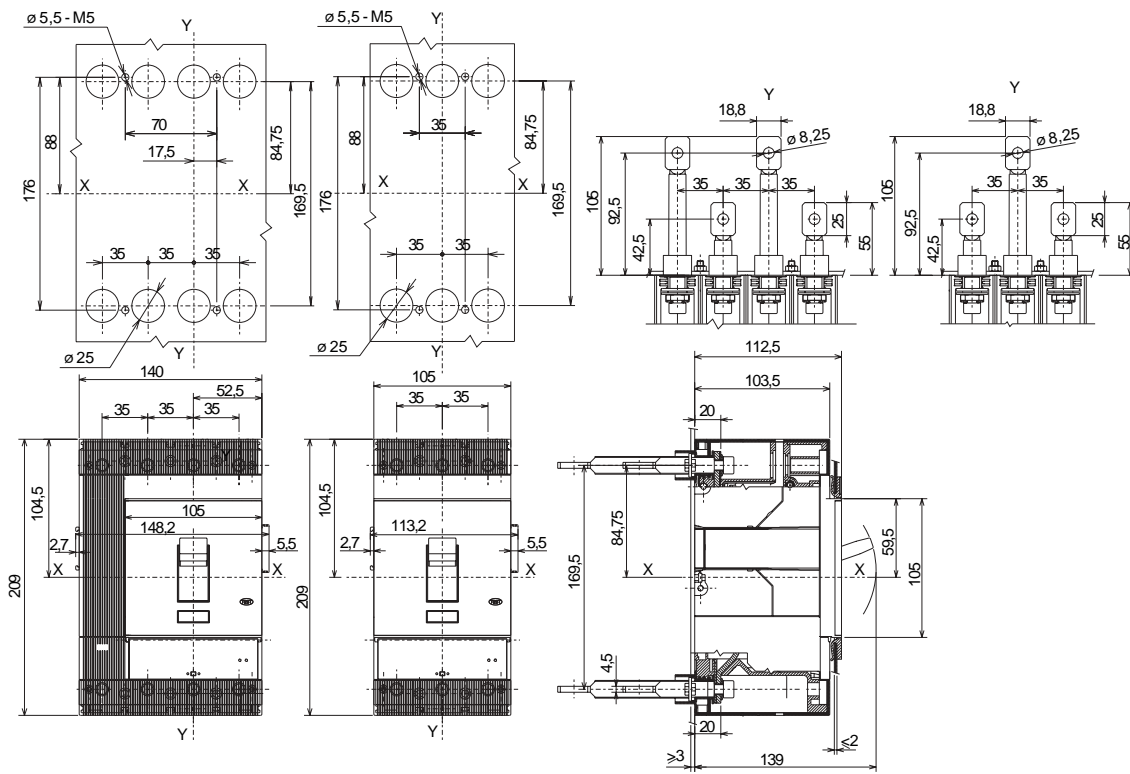
F - ES





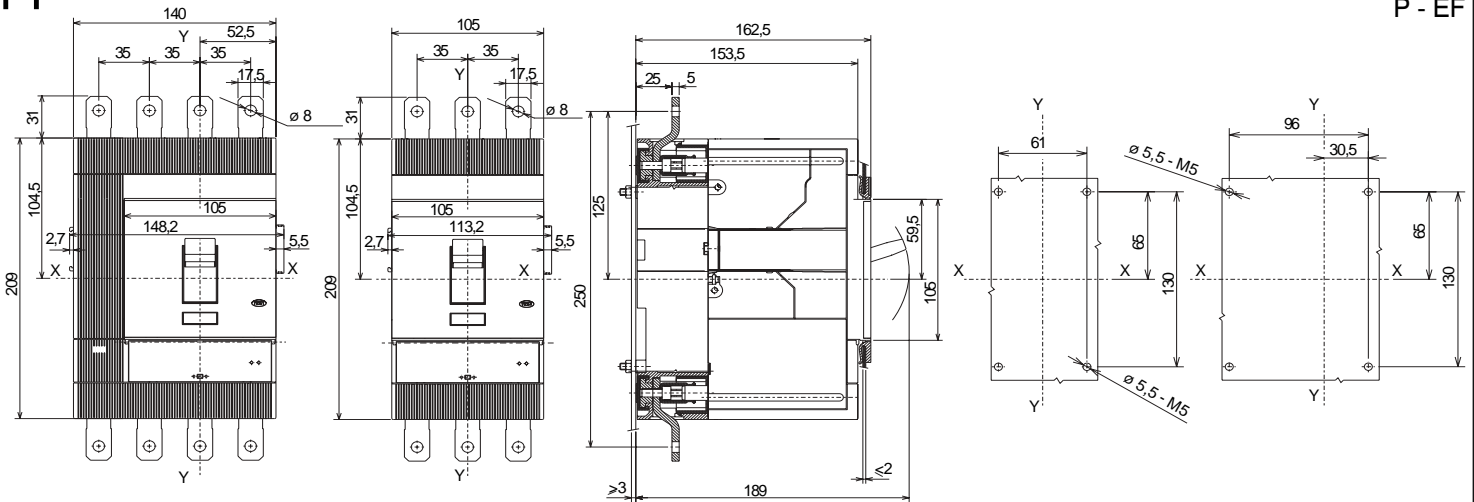
10

F - R



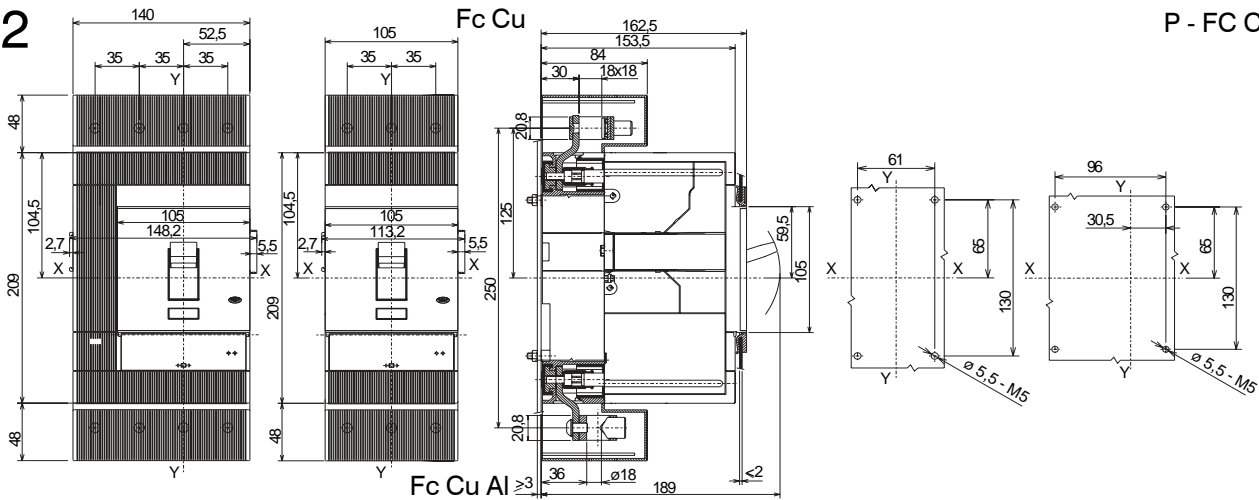
11

P - EF



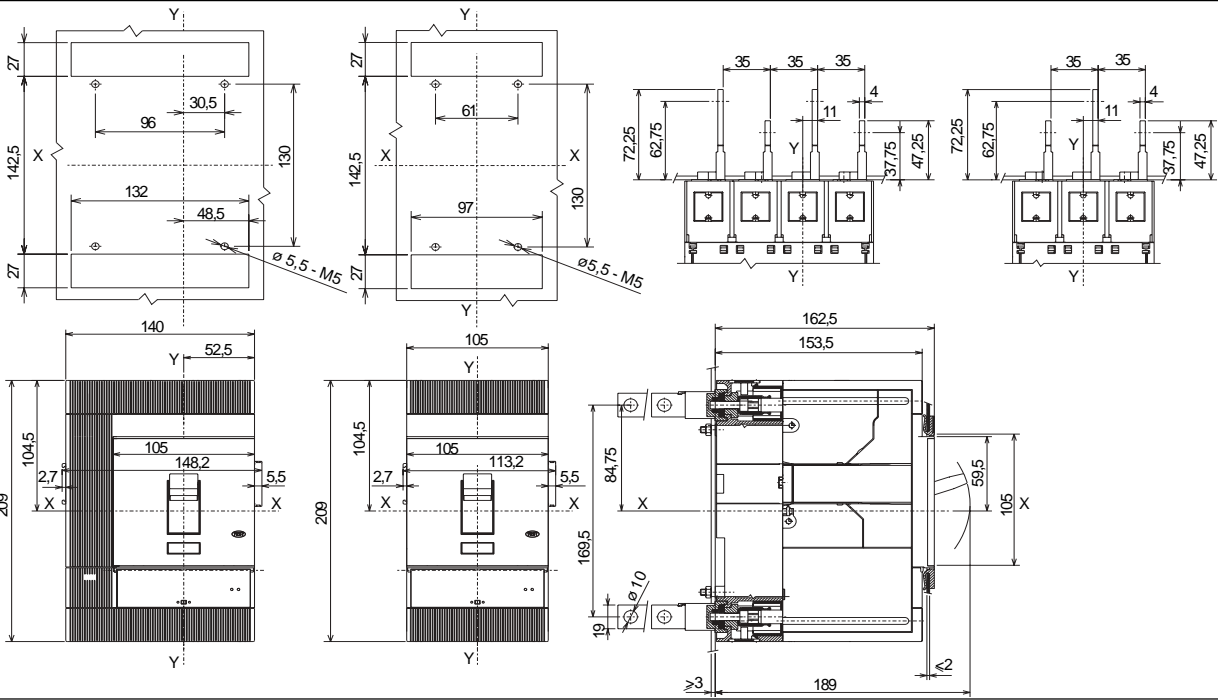
12

P - FC Cu/FC Cu Al



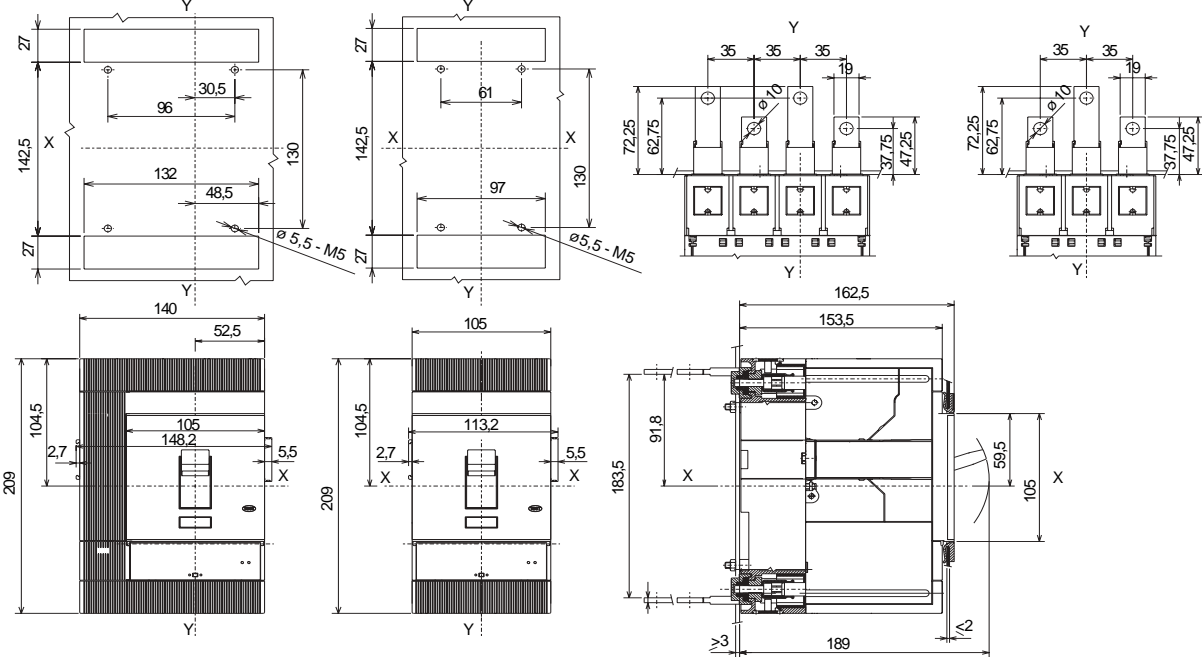
13

P - VR



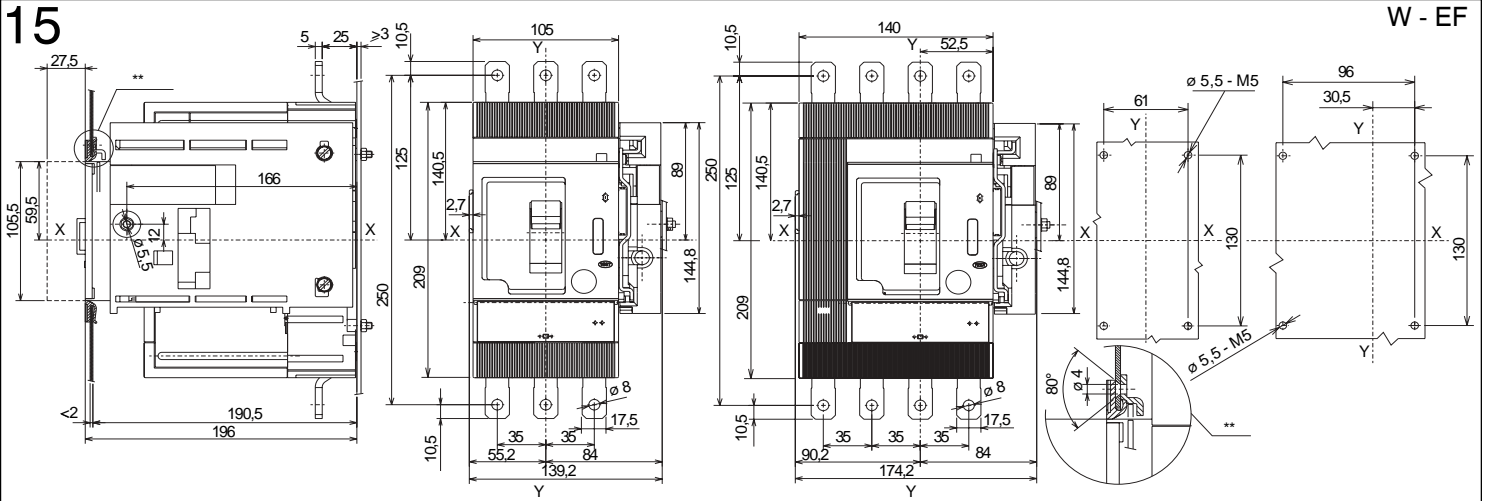
14

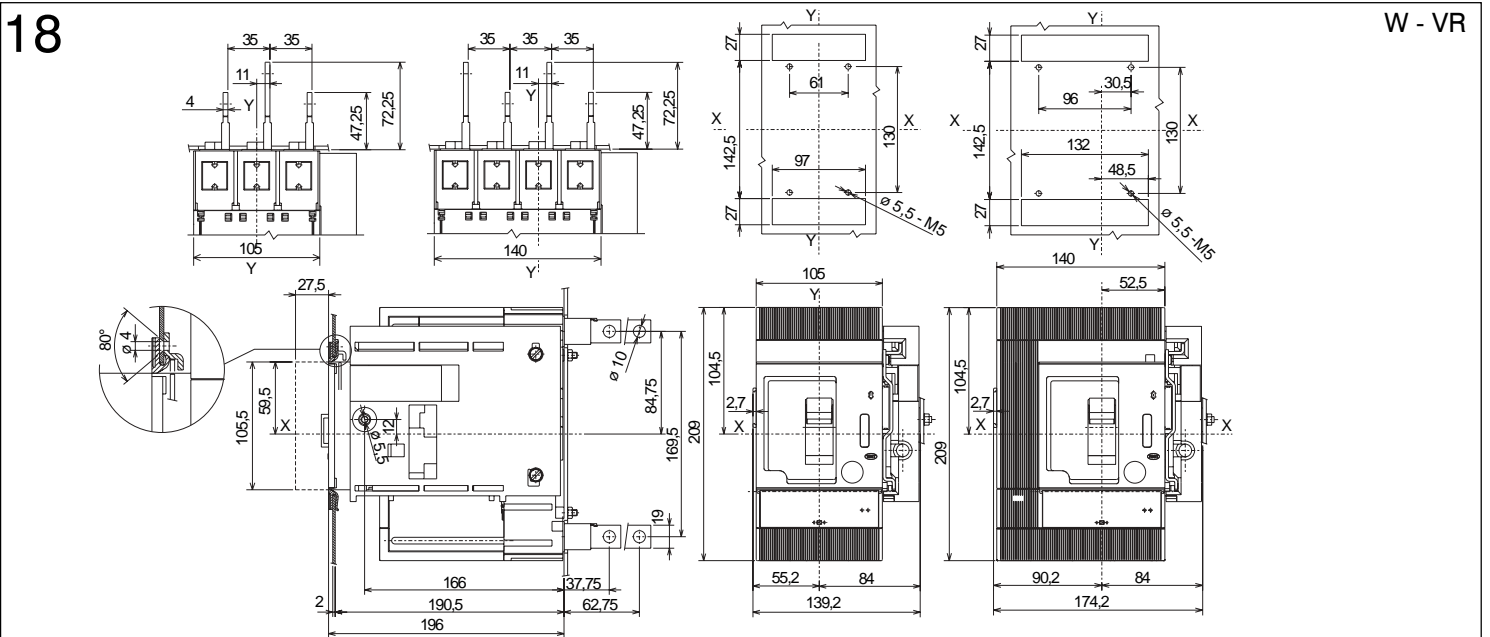
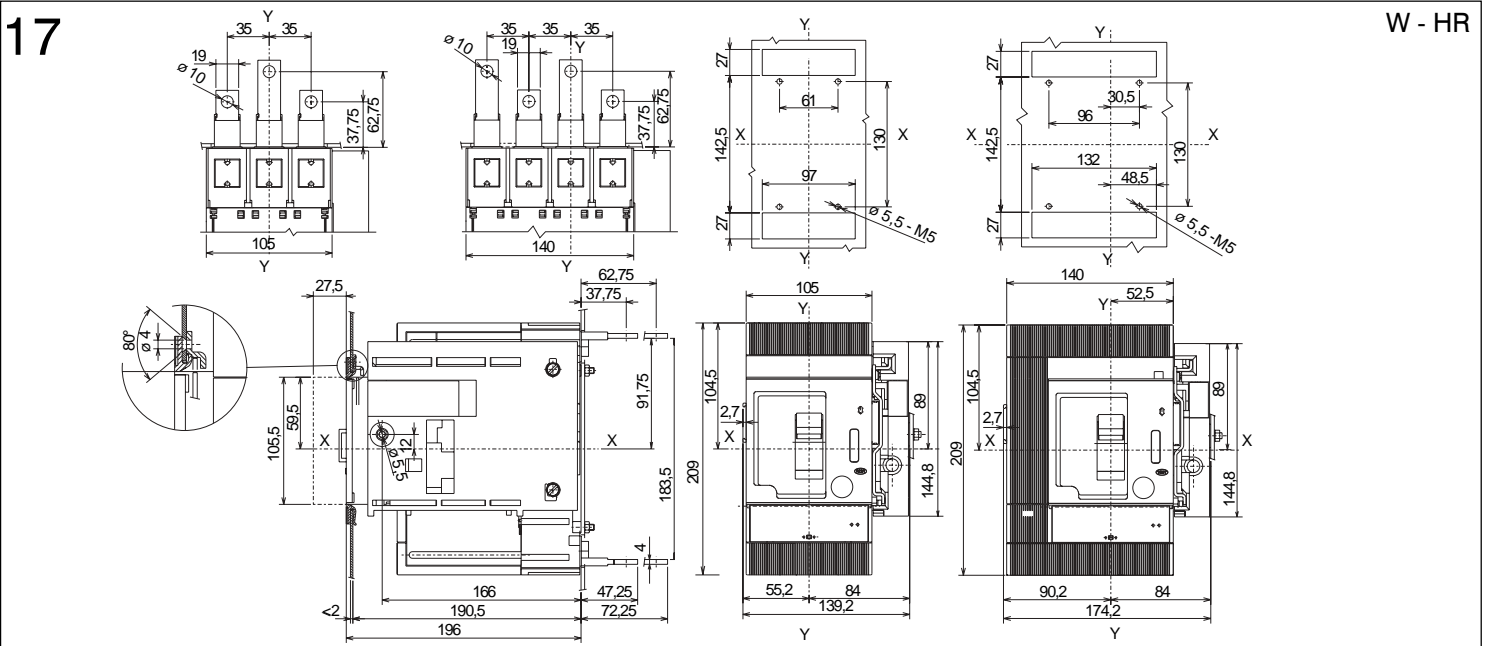
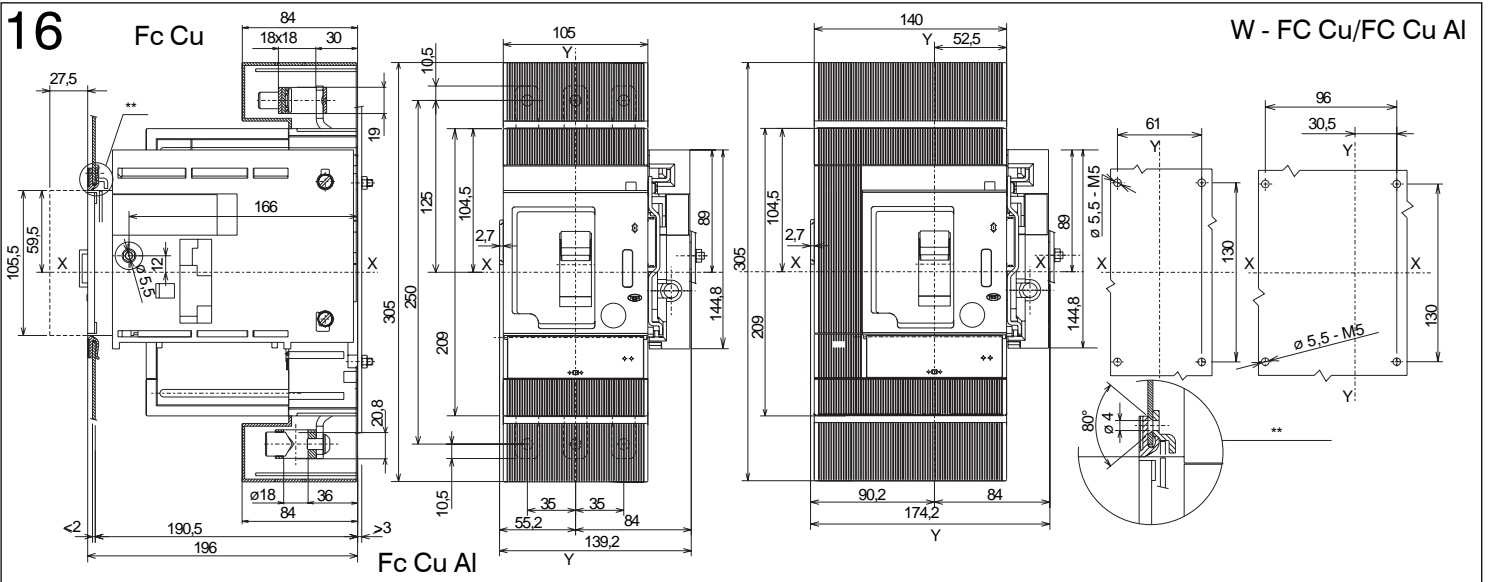
P - HR



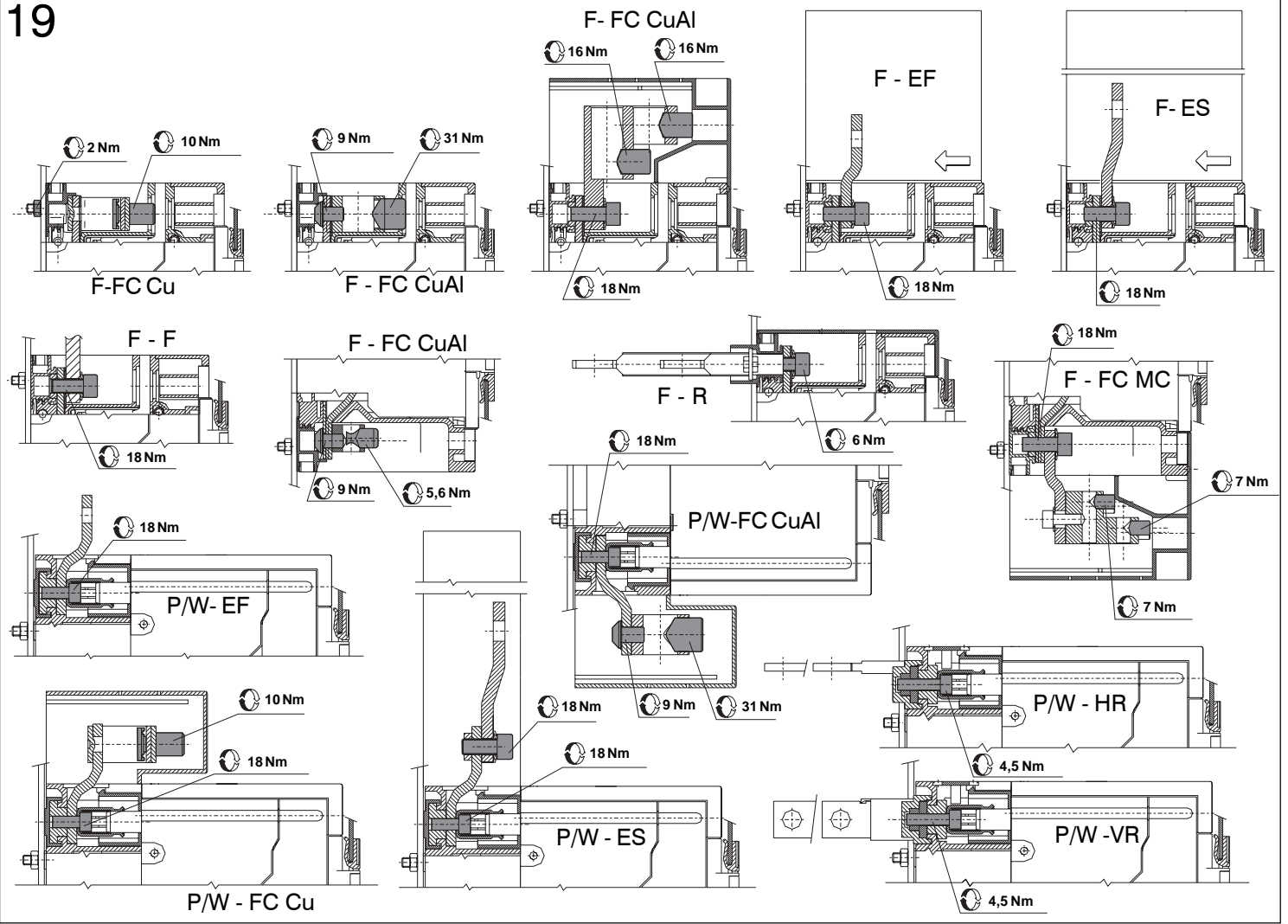
15

W - EF

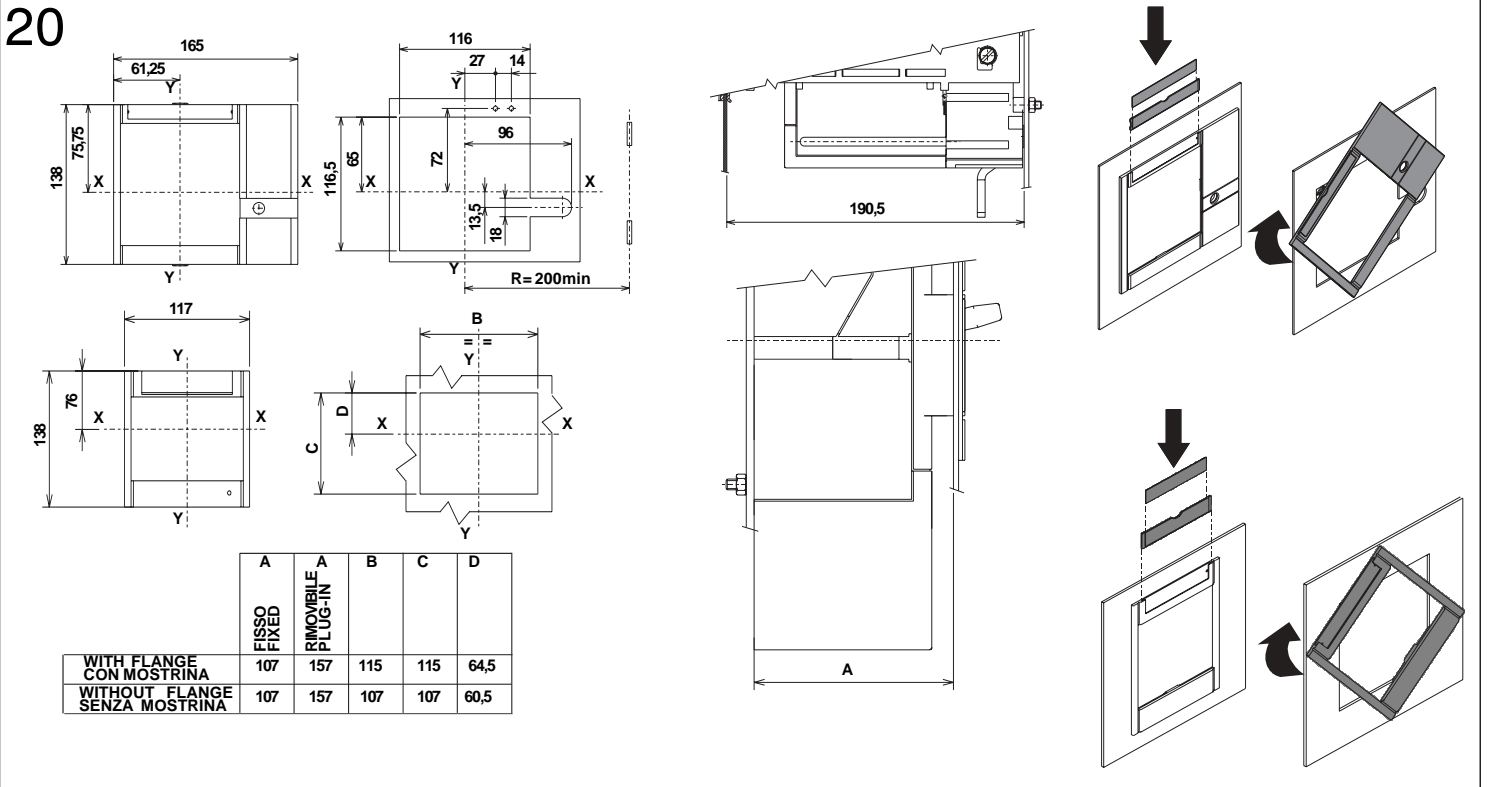




19

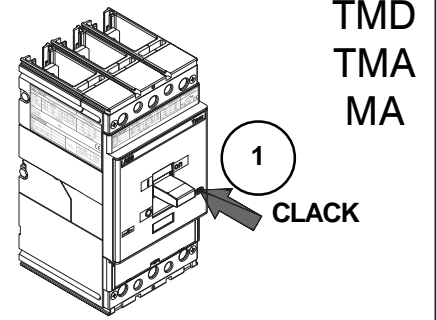
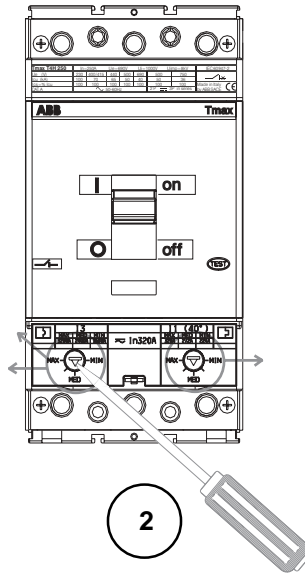


20



21

		I3		
		MIN (Inx5)	MED (Inx7,5)	MAX (Inx10)
TMA	320	1600	2.400	3200
	250	1250	1.875	2500
	200	1000	1.500	2000
	160	800	1.200	1600
	125	625	938	1250
	100	500	750	1000
TMD	80	400	600	800
	50	-	-	500
	32	-	-	320
	20	-	-	320

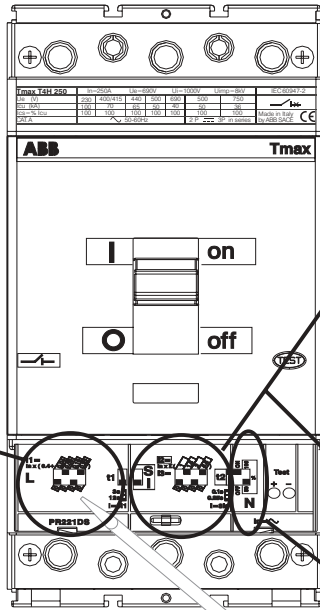
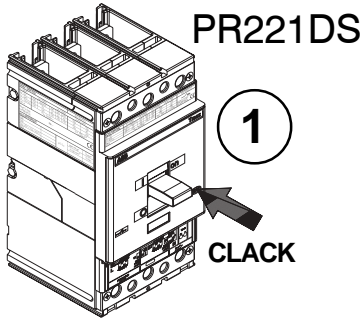


T4 MA

		I3		
		MIN (Inx6)	MED (Inx10)	MAX (Inx14)
	200	1200	2.000	2800
	160	960	1.600	2240
	125	750	1.250	1750
	100	600	1.000	1400
	80	480	800	1120
	52	312	520	728
	25	150	250	350
	10	60	100	140

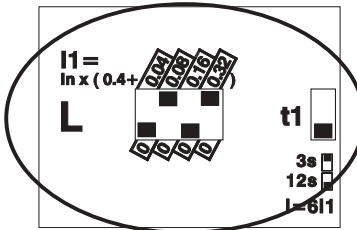
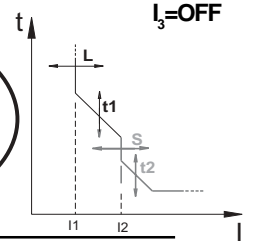
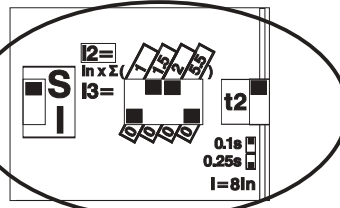
		I1				
		MIN (0,63)	MIN (0,7)	MED (0,815)	MED (0,85)	MAX (1xIn)
TMA	320	-	224	-	272	320
	250	-	175	-	213	250
	200	-	140	-	170	200
	160	-	112	-	136	160
	125	-	88	-	106	125
	100	-	70	-	85	100
TMD	80	50	-	65	-	80
	50	32	-	41	-	50
	32	20	-	26	-	32
	20	13	-	16	-	20

22



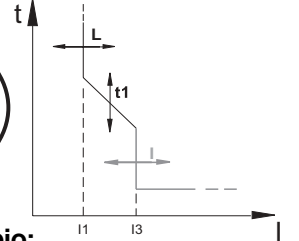
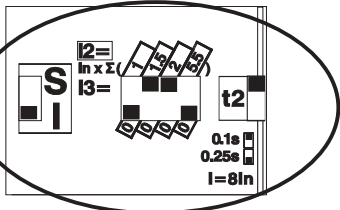
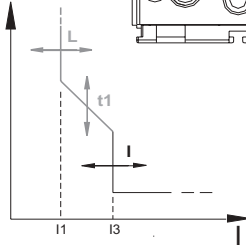
Esempio:
Example:

In=100A
 $I_2 = 100 \times (1,5+2) = 350A$
 $t_2 = 0,1 \text{ s @ } 800 \text{ A (} 8I_n \text{)}$



Esempio:
Example:

In = 100 A
 $I_1 = 100 \times (0,4+0,08+0,32) = 80A$
 $t_1 = 12 \text{ s @ } 480 \text{ A (} 6I_n \text{)}$



Esempio:
Example:

$I_2 = \text{OFF}$

Esempio:
Example:
Ne=ON ; 50%

23

TRIP TEST

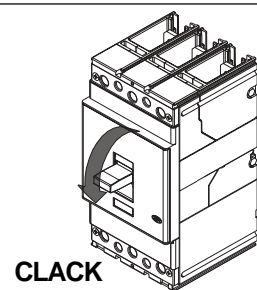
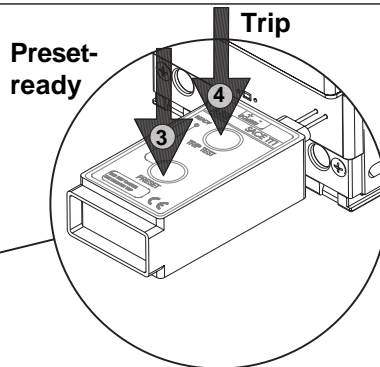
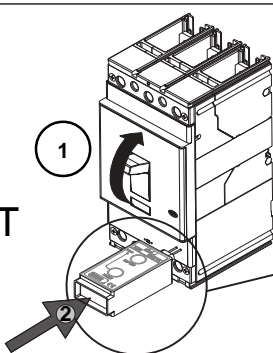


ABB SACE S.p.a.

Via Baioni, 35
 24123 Bergamo Italy
 Tel. +39 035 395.111 - Telefax +39 035 395.306-433

http://www.abb.com